

SLOW DOWN AND MOVE OVER... IT'S THE LAW!

CONNECTICUT'S MOVE OVER LAW:

Slow down and move over, or "Move Over" laws, require that when drivers approach an emergency vehicle stopped on the side of the road, they immediately slow down below the posted speed limit. If there is another lane to safely move into, do that. Connecticut actually has a stronger Move Over law as it applies to ALL vehicles stopped with flashing or hazard lights, including emergency vehicles, passenger cars, tow trucks, work trucks, etc. The Connecticut General Assembly recently expanded this requirement to emergency vehicles on a one lane road. To comply with the law, drivers should slow down below the speed limit and proceed only if it is safe to do so. Failing to follow Connecticut's "Move Over" law can result in up to a \$10,000 fine.

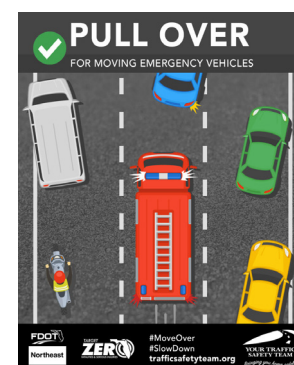
PROTECT YOURSELF AND OTHERS:

Drivers should always exercise caution when driving:

- Be on the lookout for potential dangers in front of you, especially the flashing lights of an emergency vehicle or vehicle with its hazards on.
- If you are on a one lane road, slow down and proceed with caution if it is safe to do so.
- If it is a two lane road it is okay to cross the double yellow lines if there is no oncoming traffic.
- On the highway, slow down and move to the center lane if you can.
- Remaining alert and always paying attention can prevent catastrophe.

MOVE OVER VS. PULL OVER:

Most people know that they need to pull over if there is an emergency vehicle behind them with its lights and sirens on. Move Over laws are different. They refer to any vehicle, including emergency vehicles, disabled passenger cars, work trucks, tow trucks, etc., that pulled over and have flashing or hazard lights on. In that case you should slow down below the posted speed limit and if there is an another lane, move over if it is safe to do so. Remember, if there are emergency responders behind you, pull over. If there is ANY vehicle with flashing lights on the side of the road in front of you, slow down and move over.

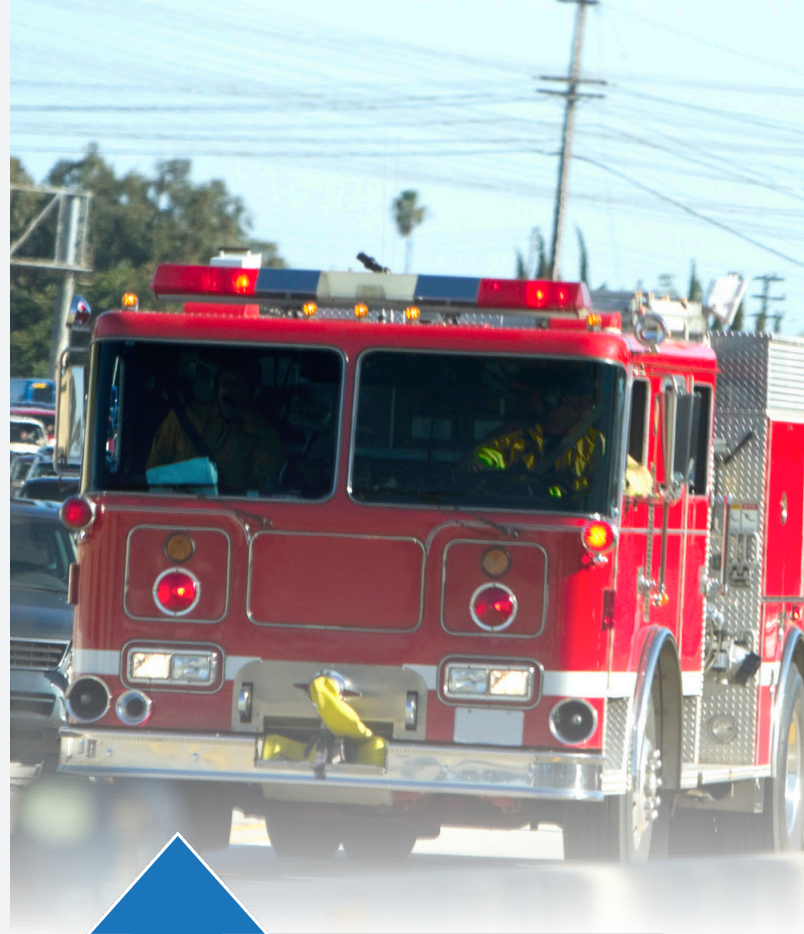


Images from Florida DOT

SLOW DOWN, MOVE OVER.

Connecticut's "Move Over" law mandates that drivers slow down and move over (if you can) when there is a vehicle pulled over on the side of the road with flashing or hazard lights on.

The law was expanded to include all vehicles pulled over on the side of the road including emergency vehicles, disabled passenger vehicles, work trucks, tow trucks, etc.



What to do if there is a vehicle on the side of the road with flashing lights?

- If you are on a one lane road, slow down and proceed with caution if it is safe to do so.
- If it is a two lane road it is ok to cross the double yellow lines if there is no oncoming traffic.
- On the highway, slow down and move to the center lane if you can.